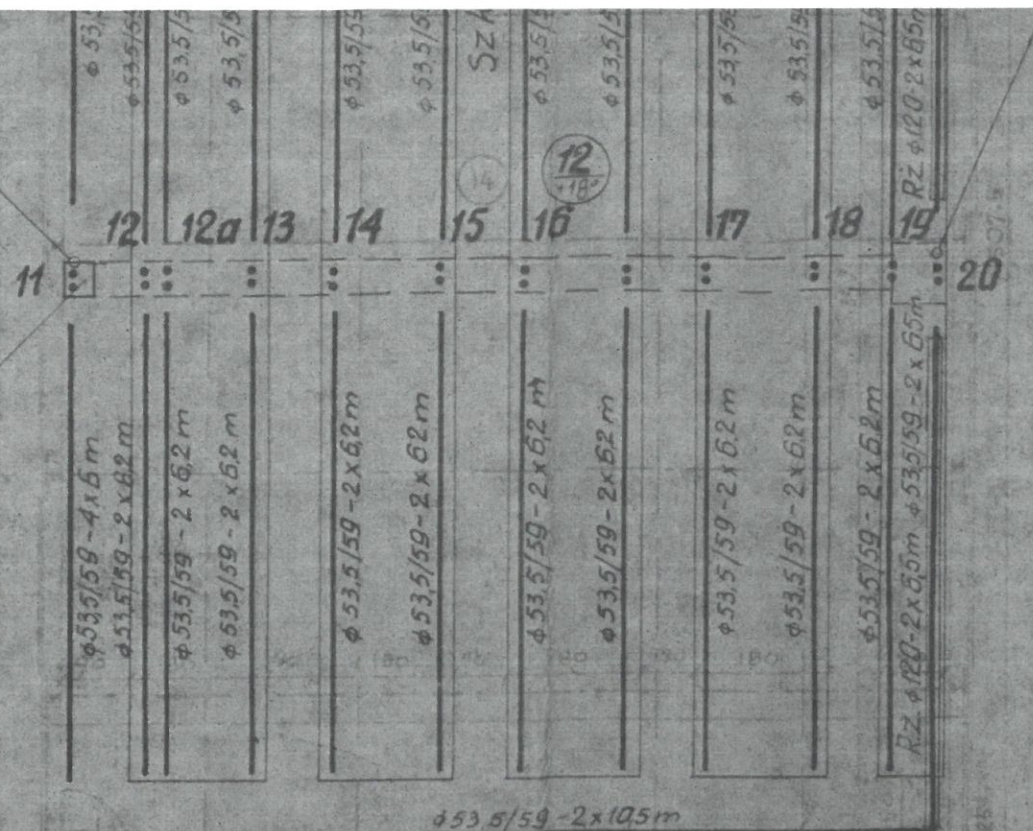


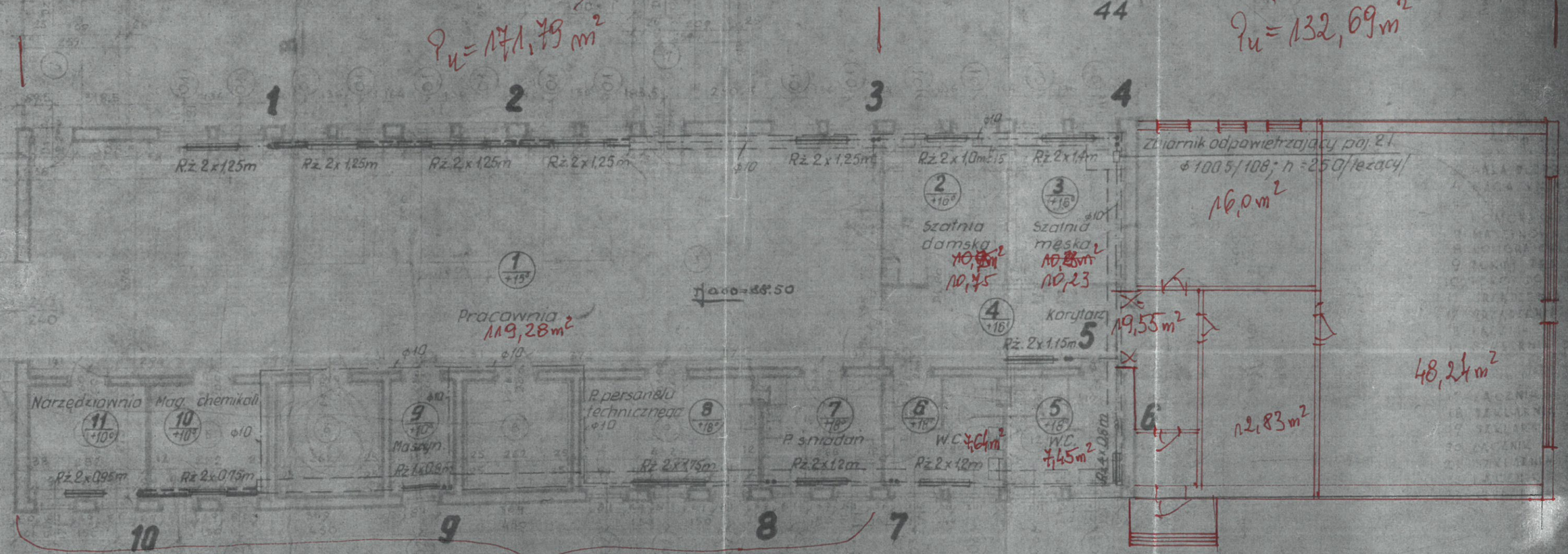
Pokrywa kontrolna 40x40



$\Sigma = 304,48 m^2$

$q_u = 171,79 m^2$

$q_u = 132,69 m^2$



$F_{pom} = 52,51 m^2$

$48,24 m^2$

$2,83 m^2$

$19,55 m^2$

$16,0 m^2$

$10,95 m^2$

$10,23 m^2$

$119,28 m^2$